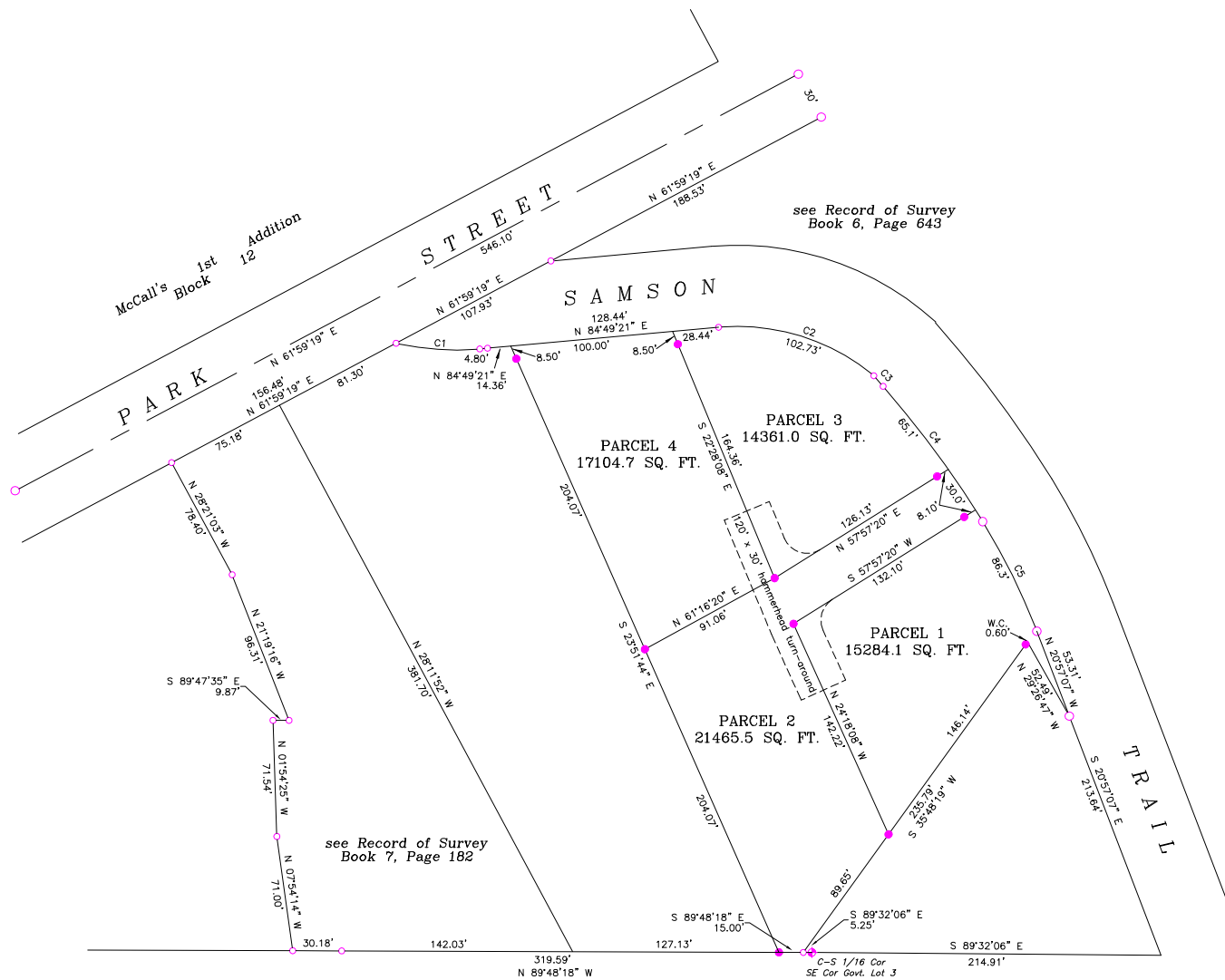


I, Joel W. Droulard, a Registered Land Surveyor, do hereby certify that this plat was prepared from notes taken during an actual survey made by me in Aug. of 2007, and that it correctly represents the points, courses and distances as recorded in said field notes.



LEGEND

- Found 5/8 inch dia. rebar
 - Found 1/2 inch dia. rebar
 - ◆ Found brass cap
 - Set 1/2" x 24" rebar w/plastic cap
 - () Record data in parentheses
- Bearings based on Record of Survey # 271945
Book 7 Page 182 of Surveys



CURVE TABLE

CURVE	RADIUS	DELTA ANGLE	ARC LENGTH	CHORD LENGTH	CHORD BEARING
C1	164.25'	18°05'08"	51.85'	51.63'	S 86°08'05" E
C2	130.75'	45°01'02"	102.73'	100.11'	S 72°40'08" E
C3	634.00'	00°47'04"	8.68'	8.68'	S 41°24'10" E
C4	634.00'	09°21'17"	103.51'	103.40'	S 36°19'59" E
C5	403.87'	10°42'03"	75.43'	75.32'	S 26°18'23" E

This Record of Survey has been reviewed and approved by the City of McCall with respect to its compliance with the Zoning Ordinance and exemption from formal platting; an individual lot shown on this Record of Survey shall be considered a single lot for purposes of City Ordinances. If this record of Survey combines lots shown on a plat or survey of record, separate sale of such separate lots will constitute an illegal subdivision under the McCall City Code.

RECORD OF SURVEY

situate in the
NW 1/4 SE 1/4 and the NE 1/4 SW 1/4 of Section 9,
T. 18 N., R. 3 E., B.M., City of McCall, Valley County, Idaho
for the

SAMSON TRAIL BUSINESS PARK