

PLAT OF WEST PINE ADDITION—PHASE II

A SUBDIVISION OF ADAMS COUNTY, IDAHO
LOCATED IN PORTIONS OF THE SE 1/4 OF SECTION 8, SW 1/4 OF SECTION 9,
N 1/2 OF SECTION 16 AND N 1/2 OF SECTION 17, T. 19 N., R. 1 E.,
BOISE MERIDIAN, IDAHO

LEGEND

- ⊙ 3/4" REBAR 1/2" ALLUMINUM CAP, SET (MARKED G. SORDENSON NY 234623 10 1890)
- 5/8" REBAR W/ 1/4" YELLOW PLASTIC CAP, SET (MARKED NY 234623 10 1890)
- △ 3/4" REBAR W/ 1/2" ALLUMINUM CAP, FOUND (MARKED G. SORDENSON NY 234623 10 1890)
- ◇ 5/8" REBAR W/ 1/4" YELLOW PLASTIC CAP, FOUND (MARKED NY 234623 10 1890)
- PUBLIC UTILITY EASEMENT
- TRAIL EASEMENT
- FOUND
- RECORD PER CAP INSTRUMENT NO. 1040674
- RECORD PER GOVERNMENT LAND OFFICE
- RECORD PER WEST PINE ADDITION—PHASE I
- CONTROL NUMBER STAMPED ON CAP

AREAS	
STREET AREA	17.438 ACRES
LOT AREA	271,870 ACRES
TOTAL AREA	289,308 ACRES

0 200 400
SCALE IN FEET
OWNER OF RECORD
K. Q. DEVELOPMENT, INC.

Gordon E. Sordenson
GORDON E. SORDENSON
IDAHO REG. REG. 1515 1890

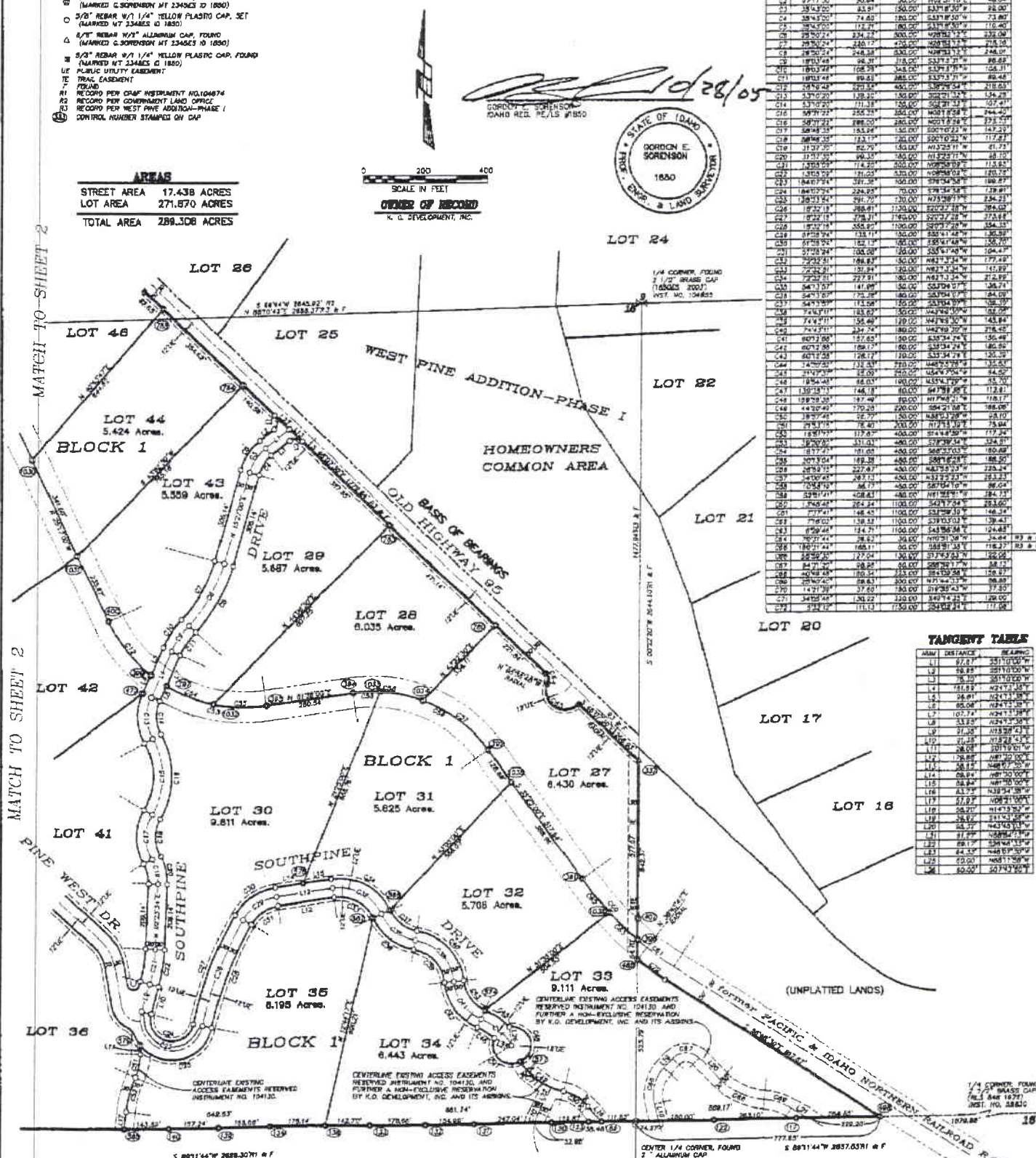


CURVE TABLE

CHAIN	DELTA	ARC	ANGLE	BEARING	DISTANCE
01	88°42'30"	43.37	30.00	N82°27'45"W	28.84
02	131°15'00"	50.84	30.00	N02°21'15"E	48.87
03	39°45'00"	23.91	150.00	S31°15'00"W	82.00
04	38°45'00"	74.82	150.00	S31°15'00"W	73.87
05	38°45'00"	172.20	150.00	S31°15'00"W	172.40
06	25°30'00"	234.22	300.00	N08°51'15"E	232.20
07	29°30'00"	285.74	450.00	N08°51'15"E	278.18
08	28°30'00"	245.33	450.00	N08°51'15"E	246.01
09	18°30'00"	96.37	315.00	S31°15'00"W	88.89
10	18°30'00"	108.28	315.00	S31°15'00"W	102.81
11	18°30'00"	118.23	315.00	S31°15'00"W	109.48
12	28°30'00"	220.82	450.00	S08°51'15"E	218.63
13	33°30'00"	139.22	150.00	S08°51'15"E	136.28
14	53°30'00"	111.38	150.00	S08°51'15"E	107.81
15	57°30'00"	225.78	300.00	N08°51'15"E	224.20
16	58°30'00"	288.00	300.00	N08°51'15"E	278.73
17	58°30'00"	153.84	150.00	S08°51'15"E	147.23
18	58°30'00"	123.17	150.00	S08°51'15"E	117.81
19	11°30'00"	82.79	150.00	N12°30'00"E	81.73
20	11°30'00"	96.35	150.00	N12°30'00"E	88.10
21	11°30'00"	112.25	300.00	N08°51'15"E	111.82
22	11°30'00"	125.25	300.00	N08°51'15"E	123.79
23	16°30'00"	131.25	300.00	N08°51'15"E	128.27
24	16°30'00"	224.85	450.00	S08°51'15"E	218.81
25	16°30'00"	292.70	450.00	S08°51'15"E	284.21
26	16°30'00"	368.81	450.00	S08°51'15"E	358.81
27	16°30'00"	445.11	450.00	S08°51'15"E	432.81
28	16°30'00"	521.41	450.00	S08°51'15"E	508.81
29	16°30'00"	597.71	450.00	S08°51'15"E	584.81
30	16°30'00"	674.01	450.00	S08°51'15"E	660.81
31	16°30'00"	750.31	450.00	S08°51'15"E	736.81
32	16°30'00"	826.61	450.00	S08°51'15"E	812.81
33	16°30'00"	902.91	450.00	S08°51'15"E	888.81
34	16°30'00"	979.21	450.00	S08°51'15"E	964.81
35	16°30'00"	1055.51	450.00	S08°51'15"E	1040.81
36	16°30'00"	1131.81	450.00	S08°51'15"E	1116.81
37	16°30'00"	1208.11	450.00	S08°51'15"E	1192.81
38	16°30'00"	1284.41	450.00	S08°51'15"E	1268.81
39	16°30'00"	1360.71	450.00	S08°51'15"E	1344.81
40	16°30'00"	1437.01	450.00	S08°51'15"E	1420.81
41	16°30'00"	1513.31	450.00	S08°51'15"E	1496.81
42	16°30'00"	1589.61	450.00	S08°51'15"E	1572.81
43	16°30'00"	1665.91	450.00	S08°51'15"E	1648.81
44	16°30'00"	1742.21	450.00	S08°51'15"E	1724.81
45	16°30'00"	1818.51	450.00	S08°51'15"E	1800.81
46	16°30'00"	1894.81	450.00	S08°51'15"E	1876.81
47	16°30'00"	1971.11	450.00	S08°51'15"E	1952.81
48	16°30'00"	2047.41	450.00	S08°51'15"E	2028.81
49	16°30'00"	2123.71	450.00	S08°51'15"E	2104.81
50	16°30'00"	2200.01	450.00	S08°51'15"E	2180.81
51	16°30'00"	2276.31	450.00	S08°51'15"E	2256.81
52	16°30'00"	2352.61	450.00	S08°51'15"E	2332.81
53	16°30'00"	2428.91	450.00	S08°51'15"E	2408.81
54	16°30'00"	2505.21	450.00	S08°51'15"E	2484.81
55	16°30'00"	2581.51	450.00	S08°51'15"E	2560.81
56	16°30'00"	2657.81	450.00	S08°51'15"E	2636.81
57	16°30'00"	2734.11	450.00	S08°51'15"E	2712.81
58	16°30'00"	2810.41	450.00	S08°51'15"E	2788.81
59	16°30'00"	2886.71	450.00	S08°51'15"E	2864.81
60	16°30'00"	2963.01	450.00	S08°51'15"E	2940.81
61	16°30'00"	3039.31	450.00	S08°51'15"E	3016.81
62	16°30'00"	3115.61	450.00	S08°51'15"E	3092.81
63	16°30'00"	3191.91	450.00	S08°51'15"E	3168.81
64	16°30'00"	3268.21	450.00	S08°51'15"E	3244.81
65	16°30'00"	3344.51	450.00	S08°51'15"E	3320.81
66	16°30'00"	3420.81	450.00	S08°51'15"E	3396.81
67	16°30'00"	3497.11	450.00	S08°51'15"E	3472.81
68	16°30'00"	3573.41	450.00	S08°51'15"E	3548.81
69	16°30'00"	3649.71	450.00	S08°51'15"E	3624.81
70	16°30'00"	3726.01	450.00	S08°51'15"E	3700.81
71	16°30'00"	3802.31	450.00	S08°51'15"E	3776.81
72	16°30'00"	3878.61	450.00	S08°51'15"E	3852.81
73	16°30'00"	3954.91	450.00	S08°51'15"E	3928.81
74	16°30'00"	4031.21	450.00	S08°51'15"E	4004.81
75	16°30'00"	4107.51	450.00	S08°51'15"E	4080.81
76	16°30'00"	4183.81	450.00	S08°51'15"E	4156.81
77	16°30'00"	4260.11	450.00	S08°51'15"E	4232.81
78	16°30'00"	4336.41	450.00	S08°51'15"E	4308.81
79	16°30'00"	4412.71	450.00	S08°51'15"E	4384.81
80	16°30'00"	4489.01	450.00	S08°51'15"E	4460.81
81	16°30'00"	4565.31	450.00	S08°51'15"E	4536.81
82	16°30'00"	4641.61	450.00	S08°51'15"E	4612.81
83	16°30'00"	4717.91	450.00	S08°51'15"E	4688.81
84	16°30'00"	4794.21	450.00	S08°51'15"E	4764.81
85	16°30'00"	4870.51	450.00	S08°51'15"E	4840.81
86	16°30'00"	4946.81	450.00	S08°51'15"E	4916.81
87	16°30'00"	5023.11	450.00	S08°51'15"E	4992.81
88	16°30'00"	5099.41	450.00	S08°51'15"E	5068.81
89	16°30'00"	5175.71	450.00	S08°51'15"E	5144.81
90	16°30'00"	5252.01	450.00	S08°51'15"E	5220.81
91	16°30'00"	5328.31	450.00	S08°51'15"E	5296.81
92	16°30'00"	5404.61	450.00	S08°51'15"E	5372.81
93	16°30'00"	5480.91	450.00	S08°51'15"E	5448.81
94	16°30'00"	5557.21	450.00	S08°51'15"E	5524.81
95	16°30'00"	5633.51	450.00	S08°51'15"E	5600.81
96	16°30'00"	5709.81	450.00	S08°51'15"E	5676.81
97	16°30'00"	5786.11	450.00	S08°51'15"E	5752.81
98	16°30'00"	5862.41	450.00	S08°51'15"E	5828.81
99	16°30'00"	5938.71	450.00	S08°51'15"E	5904.81
100	16°30'00"	6015.01	450.00	S08°51'15"E	5980.81
101	16°30'00"	6091.31	450.00	S08°51'15"E	6056.81
102	16°30'00"	6167.61	450.00	S08°51'15"E	6132.81
103	16°30'00"	6243.91	450.00	S08°51'15"E	6208.81
104	16°30'00"	6320.21	450.00	S08°51'15"E	6284.81
105	16°30'00"	6396.51	450.00	S08°51'15"E	6360.81
106	16°30'00"	6472.81	450.00	S08°51'15"E	6436.81
107	16°30'00"	6549.11	450.00	S08°51'15"E	6512.81
108	16°30'00"	6625.41	450.00	S08°51'15"E	6588.81
109	16°30'00"	6701.71	450.00	S08°51'15"E	6664.81
110	16°30'00"	6778.01	450.00	S08°51'15"E	6740.81
111	16°30'00"	6854.31	450.00	S08°51'15"E	6816.81
112	16°30'00"	6930.61	450.00	S08°51'15"E	6892.81
113	16°30'00"	7006.91	450.00	S08°51'15"E	6968.81
114	16°30'00"	7083.21	450.00	S08°51'15"E	7044.81
115	16°30'00"	7159.51	450.00	S08°51'15"E	7120.81
116	16°30'00"	7235.81	450.00	S08°51'15"E	7196.81
117	16°30'00"	7312.11	450.00	S08°51'15"E	7272.81
118	16°30'00"	7388.41	450.00	S08°51'15"E	7348.81
119	16°30'00"	7464.71	450.00	S08°51'15"E	7424.81
120	16°30'00"	7541.01	450.00	S08°51'15"E	7500.81
121	16°30'00"	7617.31	450.00	S08°51'15"E	7576.81
122	16°30'00"	7693.61	450.00	S08°51'15"E	7652.81
123	16°30'00"	7769.91	450.00	S08°51'15"E	7728.81
124	16°30'00"	7846.21	450.00	S08°51'15"E	7804.81
125	16°30'00"	7922.51	450.00	S08°51'15"E	7880.81
126	16°30'00"	7998.81	450.00	S08°51'15"E	7956.81

TANGENT TABLE

CHAIN	DISTANCE	BEARING
L1	87.77	S21°00'00"W
L2	78.19	S21°00'00"W
L3	78.19	S21°00'00"W
L4	78.19	S21°00'00"W
L5	78.19	S21°00'00"W
L6	78.19	S21°00'00"W
L7	78.19	S21°00'00"W
L8	78.19	S21°00'00"W
L9	78.19	S21°00'00"W
L10	78.19	S21°00'00"W
L11	78.19	S21°00'00"W
L12	78.19	S21°00'00"W
L13	78.19	S21°00'00"W
L14	78.19	S21°00'00"W
L15	78.19	S21°00'00"W
L16	78.19	S21°00'00"W
L17	78.19	S21°00'00"W
L18	78.19	S21°00'00"W
L19	78.19	S21°00'00"W
L20	78.19	S21°00'00"W
L21	78.19	S21°00'00"W
L22	78.19	S21°00'00"W
L23	78.19	S21°00'00"W
L24	78.19	S21°00'00"W
L25	78.19	S21°00'00"W
L26	78.19	S21°00'00"W



CERTIFICATE OF SOUTHWEST DISTRICT HEALTH DEPARTMENT

SANTARY RESTRICTIONS AS REQUIRED BY IDAHO CODE, TITLE 24, CHAPTER 13, HAVE BEEN SATISFIED. SANTARY RESTRICTIONS MAY BE FORFEITED BY ACCORDANCE WITH SECTION 20-1203, IDAHO CODE, BY THE SIGNATURE OF A CERTIFICATE OF DISAPPROVAL.

H. J. ... R.E.H.S. 104641 (UNPLATTED LANDS)

DISTRICT HEALTH DEPARTMENT, IDHS
DATE: 11/3/05

1/4 SEC.	T.	R.
8	19 N.	1 E.
9	19 N.	1 E.
16	19 N.	1 E.
17	19 N.	1 E.

DRAWING DATE: OCTOBER 27, 2005
SHEET 1 OF 4

SURVEY PERFORMED FOR:
K. Q. DEVELOPMENT, INC.
SURVEY PERFORMED BY:
SORDENSON SURVEY ENGINEERS
2810 BLANCKHART COURT
MOSCOW, ID 83853
TEL. 409-248-1893
FAX: 208-248-1893

WEST PINE ADDITION—PHASE II

A SUBDIVISION OF ADAMS COUNTY, IDAHO
 LOCATED IN PORTIONS OF THE SE 1/4 OF SECTION 8, SW 1/4 OF SECTION 9,
 N 1/2 OF SECTION 18 AND N 1/2 OF SECTION 17, T. 19 N., R. 1 E.,
 BOISE MERIDIAN, IDAHO

PLAT OF

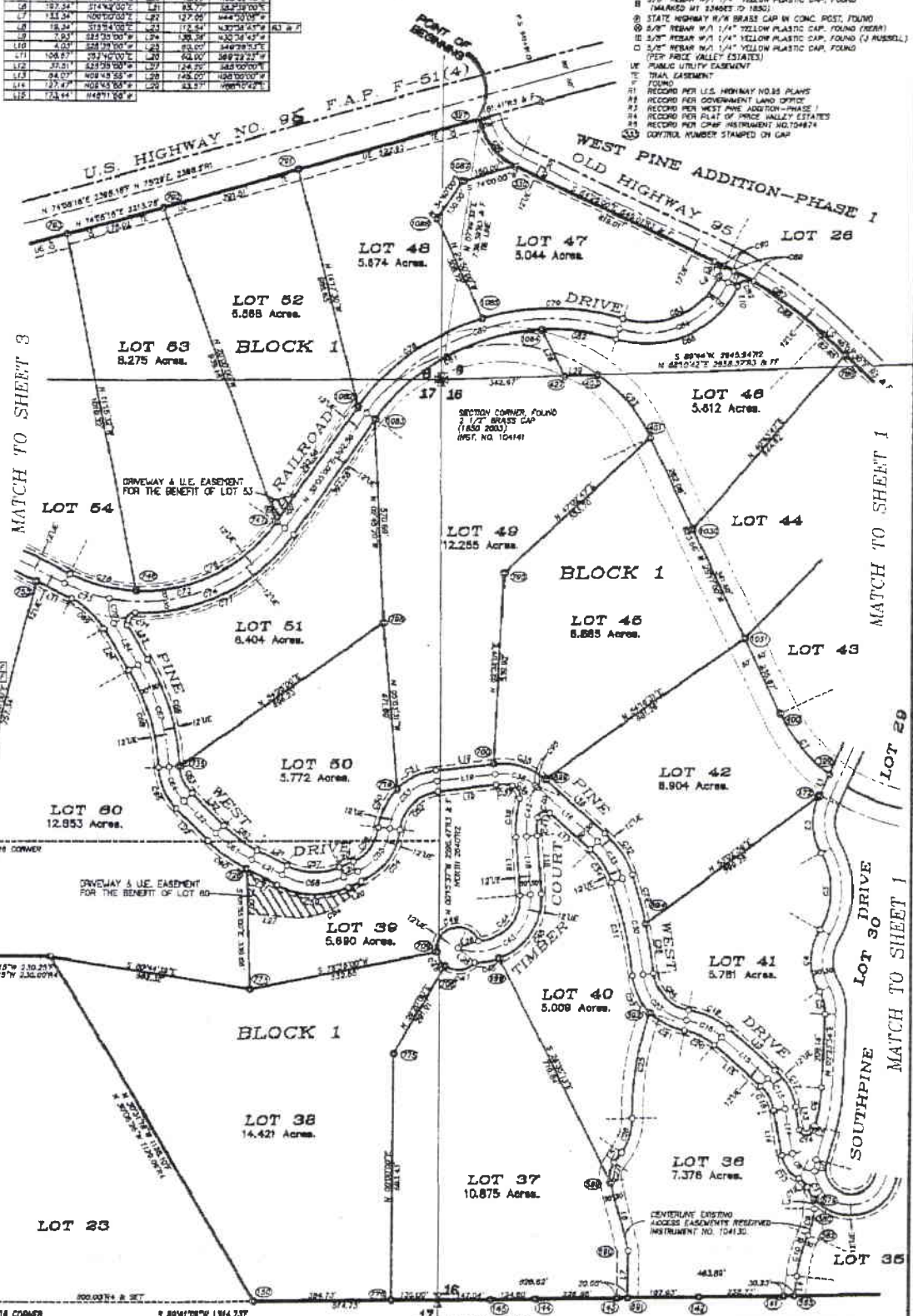
LEGEND

- 5/8" REBAR W/2" ALUMINUM CAP, SET (MARKED GORDON M/T 23465 © 1850)
- 5/8" REBAR W/1 1/4" YELLOW PLASTIC CAP, SET (MARKED M/T 23465 © 1850)
- △ 5/8" REBAR W/2" ALUMINUM CAP, FOUND (MARKED GORDON M/T 23465 © 1850)
- 5/8" REBAR W/1 1/4" YELLOW PLASTIC CAP, FOUND
- STATE HIGHWAY W/4 BRASS CAP IN CONC. POST, FOUND
- 5/8" REBAR W/1 1/4" YELLOW PLASTIC CAP, FOUND (NEAR)
- 5/8" REBAR W/1 1/4" YELLOW PLASTIC CAP, FOUND (J. RUSSELL)
- 5/8" REBAR W/1 1/4" YELLOW PLASTIC CAP, FOUND (PER PRICE VALLEY ESTATES)
- UE PUBLIC UTILITY EASEMENT
- TRAIL, CASEMENT
- FOUNDED
- RECORD PER U.S. HIGHWAY NO. 95 PLANS
- RECORD PER GOVERNMENT LAND OFFICE
- RECORD PER WEST PINE ADDITION—PHASE I
- RECORD PER PLAT OF PRICE VALLEY ESTATES
- RECORD PER CASE INSTRUMENT NO. 10484
- CONTROL NUMBER STAMPED ON CAP

TANGENT TABLE

CHAIN DISTANCE	BEARING	NUM	DISTANCE	BEARING
1.1	33.00°	100.00	100.00	144.735°
1.2	33.71°	101.78	101.78	144.735°
1.3	34.42°	103.57	103.57	144.735°
1.4	35.13°	105.36	105.36	144.735°
1.5	35.84°	107.15	107.15	144.735°
1.6	36.55°	108.94	108.94	144.735°
1.7	37.26°	110.73	110.73	144.735°
1.8	37.97°	112.52	112.52	144.735°
1.9	38.68°	114.31	114.31	144.735°
2.0	39.39°	116.10	116.10	144.735°
2.1	40.10°	117.89	117.89	144.735°
2.2	40.81°	119.68	119.68	144.735°
2.3	41.52°	121.47	121.47	144.735°
2.4	42.23°	123.26	123.26	144.735°
2.5	42.94°	125.05	125.05	144.735°
2.6	43.65°	126.84	126.84	144.735°
2.7	44.36°	128.63	128.63	144.735°
2.8	45.07°	130.42	130.42	144.735°
2.9	45.78°	132.21	132.21	144.735°
3.0	46.49°	134.00	134.00	144.735°
3.1	47.20°	135.79	135.79	144.735°
3.2	47.91°	137.58	137.58	144.735°
3.3	48.62°	139.37	139.37	144.735°
3.4	49.33°	141.16	141.16	144.735°
3.5	50.04°	142.95	142.95	144.735°
3.6	50.75°	144.74	144.74	144.735°
3.7	51.46°	146.53	146.53	144.735°
3.8	52.17°	148.32	148.32	144.735°
3.9	52.88°	150.11	150.11	144.735°
4.0	53.59°	151.90	151.90	144.735°
4.1	54.30°	153.69	153.69	144.735°
4.2	55.01°	155.48	155.48	144.735°
4.3	55.72°	157.27	157.27	144.735°
4.4	56.43°	159.06	159.06	144.735°
4.5	57.14°	160.85	160.85	144.735°
4.6	57.85°	162.64	162.64	144.735°
4.7	58.56°	164.43	164.43	144.735°
4.8	59.27°	166.22	166.22	144.735°
4.9	59.98°	168.01	168.01	144.735°
5.0	60.69°	169.80	169.80	144.735°
5.1	61.40°	171.59	171.59	144.735°
5.2	62.11°	173.38	173.38	144.735°
5.3	62.82°	175.17	175.17	144.735°
5.4	63.53°	176.96	176.96	144.735°
5.5	64.24°	178.75	178.75	144.735°
5.6	64.95°	180.54	180.54	144.735°
5.7	65.66°	182.33	182.33	144.735°
5.8	66.37°	184.12	184.12	144.735°
5.9	67.08°	185.91	185.91	144.735°
6.0	67.79°	187.70	187.70	144.735°
6.1	68.50°	189.49	189.49	144.735°
6.2	69.21°	191.28	191.28	144.735°
6.3	69.92°	193.07	193.07	144.735°
6.4	70.63°	194.86	194.86	144.735°
6.5	71.34°	196.65	196.65	144.735°
6.6	72.05°	198.44	198.44	144.735°
6.7	72.76°	200.23	200.23	144.735°
6.8	73.47°	202.02	202.02	144.735°
6.9	74.18°	203.81	203.81	144.735°
7.0	74.89°	205.60	205.60	144.735°
7.1	75.60°	207.39	207.39	144.735°
7.2	76.31°	209.18	209.18	144.735°
7.3	77.02°	210.97	210.97	144.735°
7.4	77.73°	212.76	212.76	144.735°
7.5	78.44°	214.55	214.55	144.735°
7.6	79.15°	216.34	216.34	144.735°
7.7	79.86°	218.13	218.13	144.735°
7.8	80.57°	219.92	219.92	144.735°
7.9	81.28°	221.71	221.71	144.735°
8.0	81.99°	223.50	223.50	144.735°
8.1	82.70°	225.29	225.29	144.735°
8.2	83.41°	227.08	227.08	144.735°
8.3	84.12°	228.87	228.87	144.735°
8.4	84.83°	230.66	230.66	144.735°
8.5	85.54°	232.45	232.45	144.735°
8.6	86.25°	234.24	234.24	144.735°
8.7	86.96°	236.03	236.03	144.735°
8.8	87.67°	237.82	237.82	144.735°
8.9	88.38°	239.61	239.61	144.735°
9.0	89.09°	241.40	241.40	144.735°
9.1	89.80°	243.19	243.19	144.735°
9.2	90.51°	244.98	244.98	144.735°
9.3	91.22°	246.77	246.77	144.735°
9.4	91.93°	248.56	248.56	144.735°
9.5	92.64°	250.35	250.35	144.735°
9.6	93.35°	252.14	252.14	144.735°
9.7	94.06°	253.93	253.93	144.735°
9.8	94.77°	255.72	255.72	144.735°
9.9	95.48°	257.51	257.51	144.735°
10.0	96.19°	259.30	259.30	144.735°

(UNPLATTED LANDS)



CURVE TABLE

CHAIN DISTANCE	BEARING	NUM	DISTANCE	BEARING
1.1	33.00°	100.00	100.00	144.735°
1.2	33.71°	101.78	101.78	144.735°
1.3	34.42°	103.57	103.57	144.735°
1.4	35.13°	105.36	105.36	144.735°
1.5	35.84°	107.15	107.15	144.735°
1.6	36.55°	108.94	108.94	144.735°
1.7	37.26°	110.73	110.73	144.735°
1.8	37.97°	112.52	112.52	144.735°
1.9	38.68°	114.31	114.31	144.735°
2.0	39.39°	116.10	116.10	144.735°
2.1	40.10°	117.89	117.89	144.735°
2.2	40.81°	119.68	119.68	144.735°
2.3	41.52°	121.47	121.47	144.735°
2.4	42.23°	123.26	123.26	144.735°
2.5	42.94°	125.05	125.05	144.735°
2.6	43.65°	126.84	126.84	144.735°
2.7	44.36°	128.63	128.63	144.735°
2.8	45.07°	130.42	130.42	144.735°
2.9	45.78°	132.21	132.21	144.735°
3.0	46.49°	134.00	134.00	144.735°
3.1	47.20°	135.79	135.79	144.735°
3.2	47.91°	137.58	137.58	144.735°
3.3	48.62°	139.37	139.37	144.735°
3.4	49.33°	141.16	141.16	144.735°
3.5	50.04°	142.95	142.95	144.735°
3.6	50.75°	144.74	144.74	144.735°
3.7	51.46°	146.53	146.53	144.735°
3.8	52.17°	148.32	148.32	144.735°
3.9	52.88°	150.11	150.11	144.735°
4.0	53.59°	151.90	151.90	144.735°
4.1	54.30°	153.69	153.69	144.735°
4.2	55.01°	155.48	155.48	144.735°
4.3	55.72°	157.27	157.27	144.735°
4.4	56.43°	159.06	159.06	144.735°
4.5	57.14°	160.85	160.85	144.735°
4.6	57.85°	162.64	162.64	144.735°
4.7	58.56°	164.43	164.43	144.735°
4.8	59.27°	166.22	166.22	144.735°
4.9	59.98°	168.01	168.01	144.735°
5.0	60.69°	169.80	169.80	144.735°
5.1	61.40°	171.59	171.59	144.735°
5.2	62.11°	173.38	173.38	144.735°
5.3	62.82°	175.17	175.17	144.735°
5.4	63.53°	176.96	176.96	144.735°
5.5	64.24°	178.75	178.75	144.735°
5.6	64.95°	180.54	180.54	144.735°
5.7	65.66°	182.33	182.33	144.735°
5.8	66.37°	184.12	184.12	144.735°
5.9	67.08°	185.91	185.91	144.735°
6.0	67.79°	187.70	187.70	144.735°
6.1	68.50°	189.49	189.49	144.735°
6.2	69.21°	191.28	191.28	144.735°
6.3	69.92°	193.07	193.07	144.735°
6.4	70.63°	194.86	194.86	144.735°
6.5	71.34°	196.65	196.65	144.735°
6.6	72.05°	198.44	198.44	144.735°
6.7	72.76°	200.23	200.23	144.735°
6.8	73.47°	202.02	202.02	144.735°
6.9	74.18°	203.81	203.81	144.735°
7.0	74.89°	205.60	205.60	144.735°
7.1	75.60°	207.39	207.39	144.735°
7.2	76.31°	209.18	209.18	144.735°
7.3	77.02°	210.97	210.97	144.735°
7.4	77.73°	212.76	212.76	144.735°
7.5	78.44°	214.55	214.55	144.735°
7.6	79.15°	216.34	216.34	144.735°
7.7	79.86°	218.13	218.13	144.735°
7.8	80.57°	219.92	219.92	144.735°
7.9	81.28°	221.71	221.71	144.735°
8.0	81.99°	223.50	223.50	144.735°
8.1	82.70°	225.29	225.29	144.735°
8.2	83.41°	227.08	227.08	144.735°
8.3	84.12°	228.87	228.87	144.735°
8.4	84.83°	230.66	230.66	144.735°
8.5	85.54°	232.45	232.45	144.735°
8.6	86.25°	234.24	234.24	144.735°
8.7	86.96°	236.03	236.03	144.735°
8.8	87.67°	237.82	237.82	144.735°
8.9	88.38°	239.61	239.61	144.735°
9.0	89.09°	241.40	241.40	144.735°
9.1	89.80°	243.19	243.19	144.735°
9.2	90.51°	244.98	244.98	144.735°
9.3	91.22°	246.77	246.77	144.735°
9.4	91.93°	248.56	248.56	144.735°
9.5	92.64°	250.35	250.35	144.735°
9.6	93.35°	252.14	252.14	144.735°
9.7	94.06°	253.93	253.93	144.735°
9.8	94.77°	255.72	255.72	144.735°
9.9	95.48°	257.51	257.51	144.735°
10.0	96.19°	259.30	259.30	144.735°

LOT 59
 LOT 58
 LOT 57
 LOT 56
 LOT 55
 LOT 54
 LOT 53
 LOT 52
 LOT 51
 LOT 50
 LOT 49
 LOT 48
 LOT 47
 LOT 46
 LOT 45
 LOT 44
 LOT 43
 LOT 42
 LOT 41
 LOT 40
 LOT 39
 LOT 38
 LOT 37
 LOT 36
 LOT 35
 LOT 34
 LOT 33
 LOT 32
 LOT 31
 LOT 30
 LOT 29

PRICE VALLEY RANCH ESTATES SUBDIVISION
 LOT 24
 LOT 23
 LOT 22
 LOT 21
 LOT 20
 LOT 19
 LOT 18
 LOT 17
 LOT 16

SCALE IN FEET
 0 100 200

ADAM COUNTY, IDAHO
 GORDON E. SORENSON
 1850
 CHOR & LAND SURVEYOR